

## ClariCELL<sup>®</sup> TXK Kinase Assay Service

### Description

The ClariCELL TXK Kinase Assay quantifies autophosphorylation of human full-length TXK in human cells. The assay is useful to determine potencies of small-molecule inhibitors against the specified kinase in the context of a cellular environment. Compound testing services are available utilizing the assay.

### Overview

Human Embryonic Kidney (HEK 293) cells transiently expressing sequence verified human full-length TXK are exposed to test compound or control, then lysed to release cellular proteins. TXK is captured onto an assay plate, and the extent of autophosphorylation is quantified by ELISA using an antibody specific for the phosphorylation event. Cells expressing kinase deficient TXK [K299M] are also utilized as controls.

### Assay Validation

#### TXK Expression in Cells

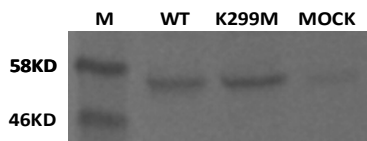


Figure 1: Wild type (WT) or kinase dead (K299M) TXK was expressed transiently in 293 cells. Following cell lysis, an IP Western was performed with appropriate antibodies to capture and detect total TXK protein.

#### TXK Autophosphorylation in Cells

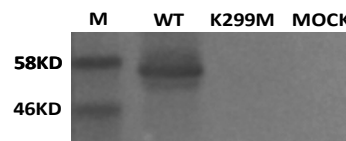


Figure 2: Wild type (WT) or kinase dead (K299M) TXK was expressed transiently in 293 cells. Following cell lysis, an IP Western was performed with appropriate antibodies to capture and detect phospho-TXK protein.

#### Quantification of Phosphorylation

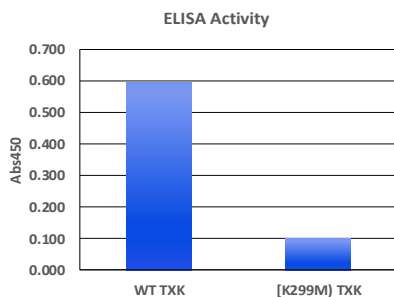


Figure 3: Wild type (WT) or kinase dead (K299M) TXK was expressed transiently in 293 cells. Following cell lysis, an ELISA was performed to quantify the extent of auto-phosphorylation of TXK.

#### Reference Inhibitor Data

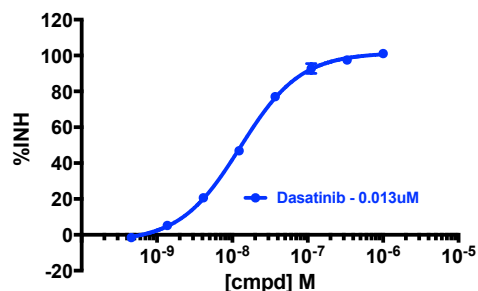


Figure 4: An autophosphorylation assay was performed in the presence of dasatinib, a TXK inhibitor. % inhibition data were plotted to determine the IC50.